

READING CIRCLE OBSERVATION GRID¹

GROUP NAME	
DATE	

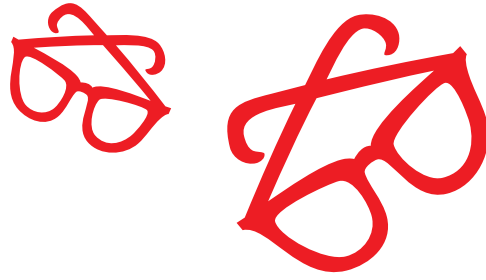
NAME	WAS PREPARED?	PARTICIPATED?	THINKING SKILLS*	SOCIAL SKILLS**

This observation grid permits teachers to evaluate each group member using four different criteria. While the first two criteria are easily observable and measurable, the last two are deeper and more implicit.

* The student's **Thinking Skills**. The teacher indicates a noteworthy comment made by each student, whether it be a quote or summary. He then notes what type of remark was made. This can be done on-the-spot or later on. **Please refer to the back of this sheet for a listing of thinking skills.**

** The student's **Social Skills**. As in the previous paragraph, the teacher tries to identify one social skill the student has, or one which must be developed. **Please refer to the back of this sheet for a listing of social skills.**

¹ Adapted from Samway and Whang's *Literature Study Circles in a Multicultural Classroom* (1995)



LISTINGS OF THINKING AND SOCIAL SKILLS²

THINKING SKILLS

- makes connections with personal experience, current events, other books, authors, stories, artworks
- visualizes the scene, people, events
- puts himself into the story
- rereads to clarify, check and confirm facts
- savors the story, language, events
- questions the author, characters, text
- analyzes, interprets and make inferences
- draws conclusions
- makes judgments
- evaluates the book, author, characters
- notices words and language
- reads passages aloud
- looks for patterns

SOCIAL SKILLS

- takes turns
- listens actively
- makes eye contact
- leans forward
- nods
- confirms
- responds
- shares air-time
- includes everybody
- does not dominate
- pulls other people in
- does not interrupt
- speaks directly to others
- receives others' ideas
- is tolerant
- honours people's sensitive issues
- speaks up when he disagrees
- respects differences
- disagrees constructively
- does not verbally attack others
- stays focused on the task
- supports his views with the book
- trusts others
- is responsible to the group